

Maximum capacity		
Class room	Thearter	U shape
72	90	48
Rental fee(JPY) ※Tax exluded		
First 3 hrs	Additional hour	All day 8am-5pm
62,500	22,000	125,000

Rose Room
(Annex Tower)

Total floor space: 94 m²



Maximum capacity		
Class room	Thearter	U shape
60	70	42
Rental fee(JPY) ※Tax exluded		
First 3 hrs	Additional hour	All day 8am-5pm
45,000	16,000	90,000

Yayoi/Uzuki
(Annex Tower)

Total floor space: 47 m²



Maximum capacity		
Class room	Thearter	U shape
30	35	30
Rental fee(JPY) ※Tax exluded		
First 3 hrs	Additonal hour	All day 8am-5pm
25,000	9,000	50,000

■ Following items are available for free:



2 Wireless Microphones



White board



Moderator Table



CD Player

■ Following items are available at a fee(Tax not included):



A pot of coffee(tea)/Large(for 13 cups) ¥4,000



A pot of coffee(tea)/Small(for 6 cups) ¥4,000



Projector & screen ¥12,000



Mineral water ¥100

For more items, such refreshments, soft drinks, and others, please ask us.

Access from Nishi-Shinjuku Station (Tokyo Metro Line)



1. There is only one gate. Walk through it.



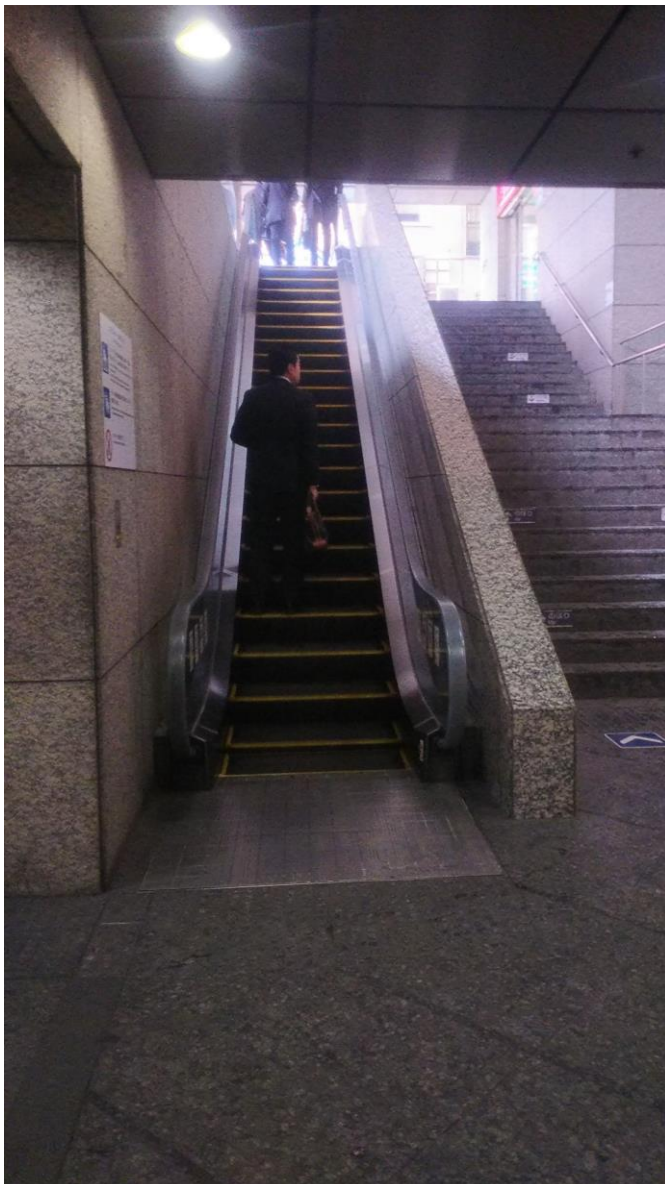
2. Head toward the Exit 1.



3. AS you approach the Exit 1, you see the TULLY's Coffee.
Head toward it.



4. AS you walk up the stair ways, you will see the escalator on the left. Go up the escalator.



5. You will be on the ground floor and you see the Ome Road. As you face the road, turn to the left.



6. Keep walking along the road.



7. You will find the Hotel Rose Garden Shinjuku on the left.
It is just a one-minute walk from the Nishi-Shinjuku station.



For more details, please make contact with :
Gota Kato, the sales representative
(TEL)+3 3360 1533
(Email) sales@hotel-rosegarden.jp

**✓ If you have a plan to hold a banquet, please
do not hesitate to ask.**